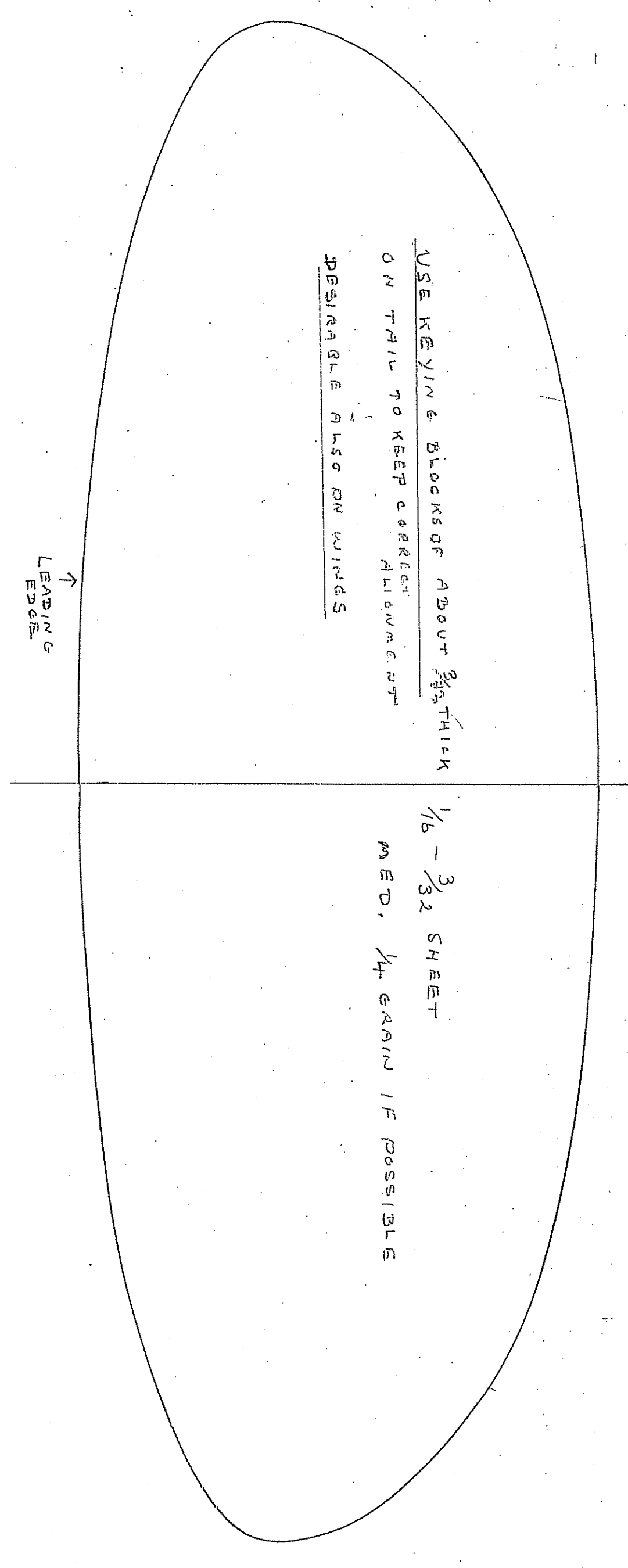
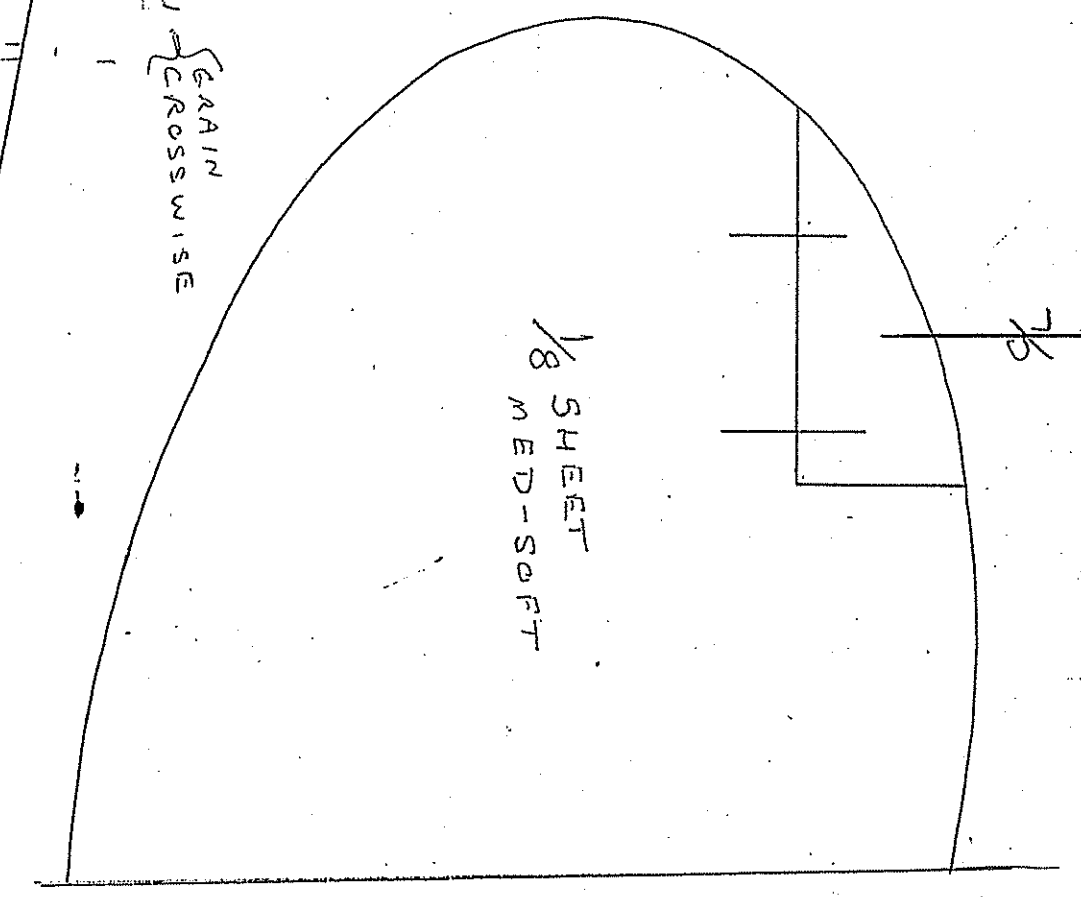


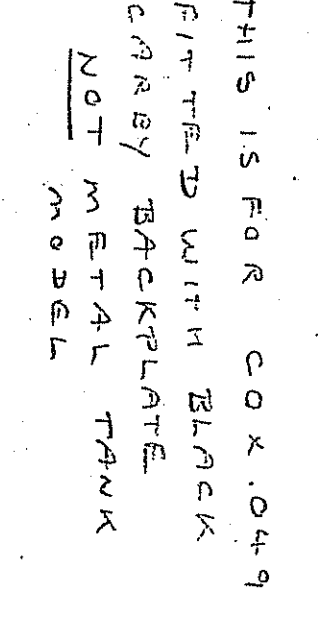
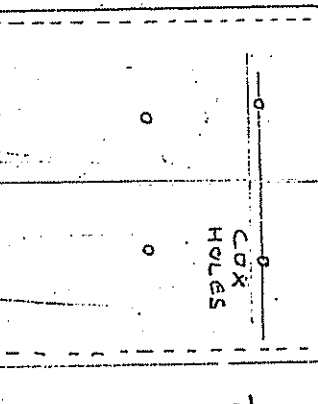
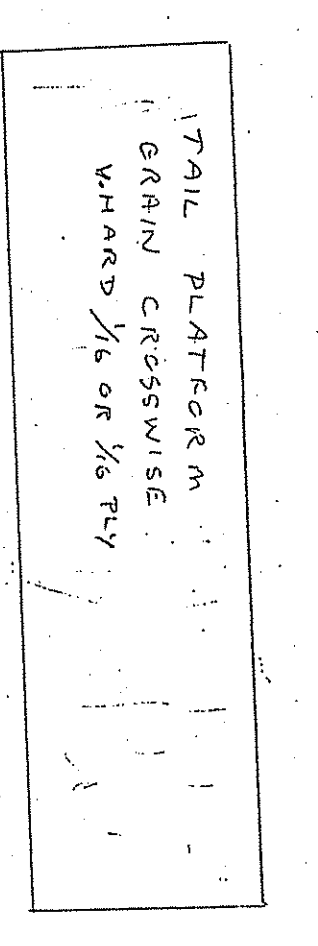
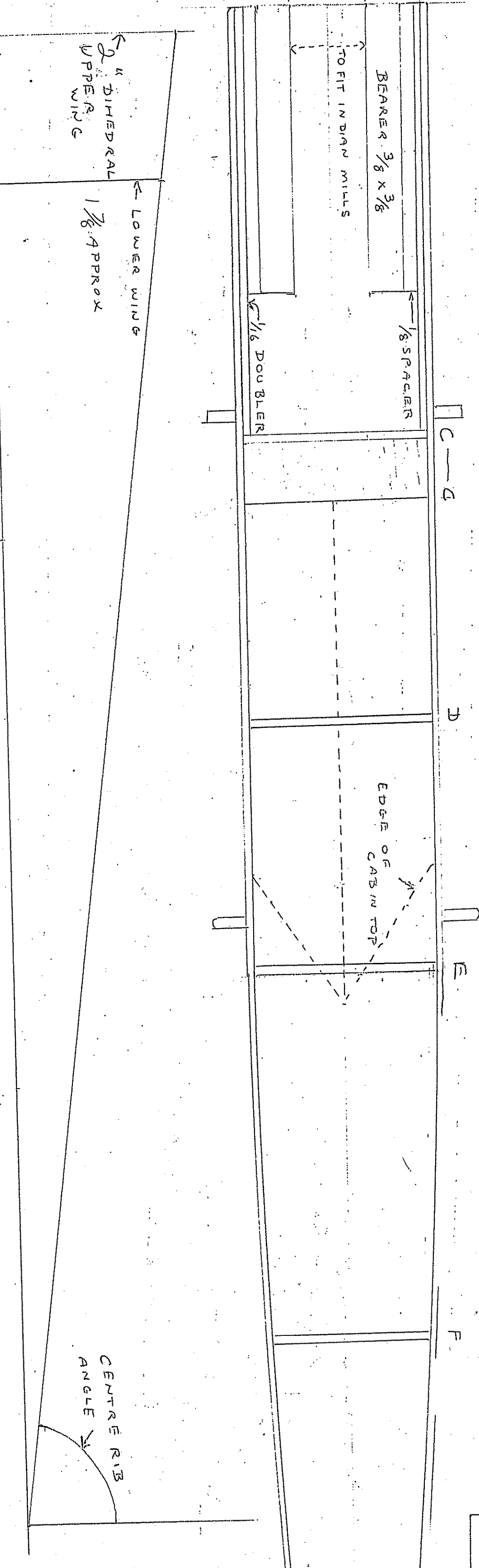
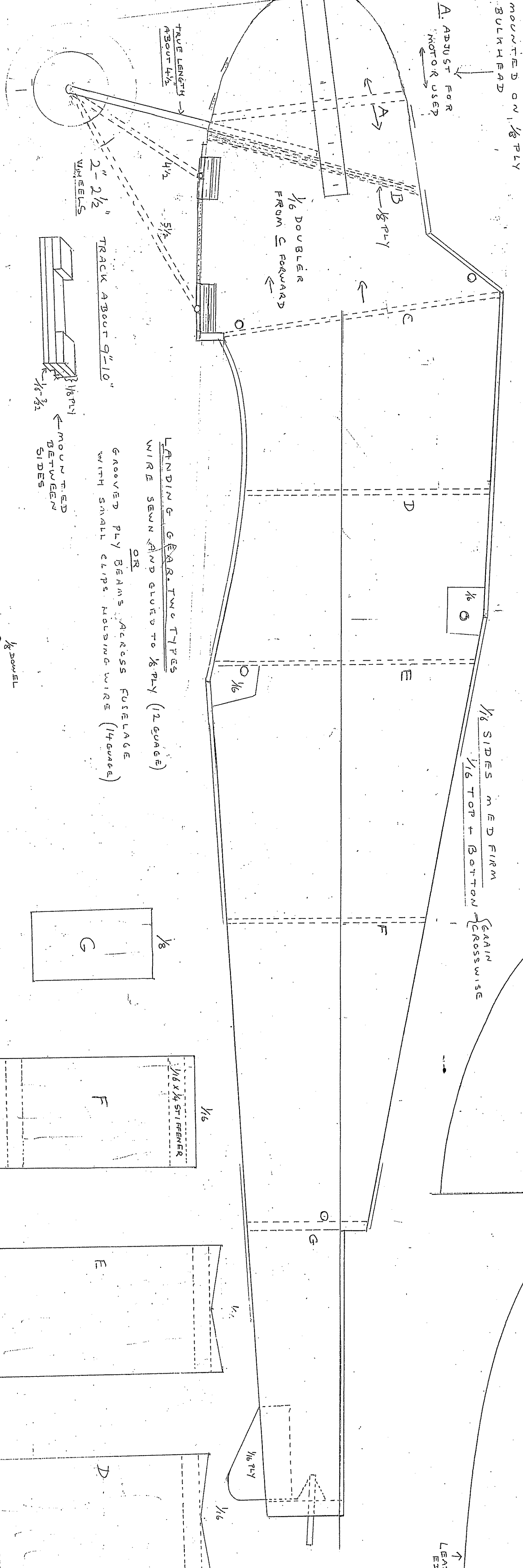
RIBS A AND B HAVE SHADERS AREA REMOVED (AFTER WING IS ASSEMBLED) TO ALLOW SQUARE SECTION SHEDDING. ALSO RECESSED FOR 3/8 SHEET AT C.

RIBS C INCLUDE SHADERS AREA AND ARE RECESSED FOR 1/2 SUB-SHAFT

INSTEAD OF TRYING THE ENDS OF THE RIBS CAN BE STOP-CUT TO A BRAD PIN POSITION ON THE BUILDING BRID. A DAM STOP IS THE WING AT THE WING BLADE ENTRY BEHIND THE WING FROM THE BLOOD.

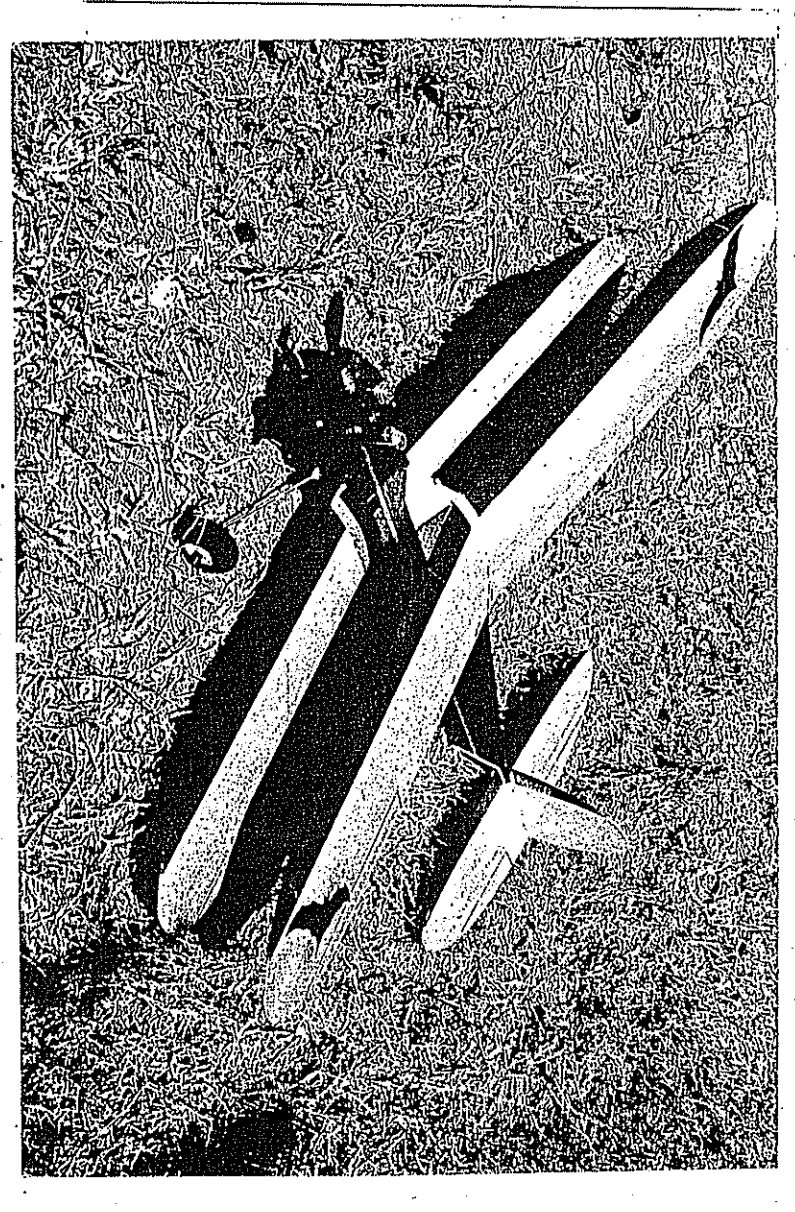
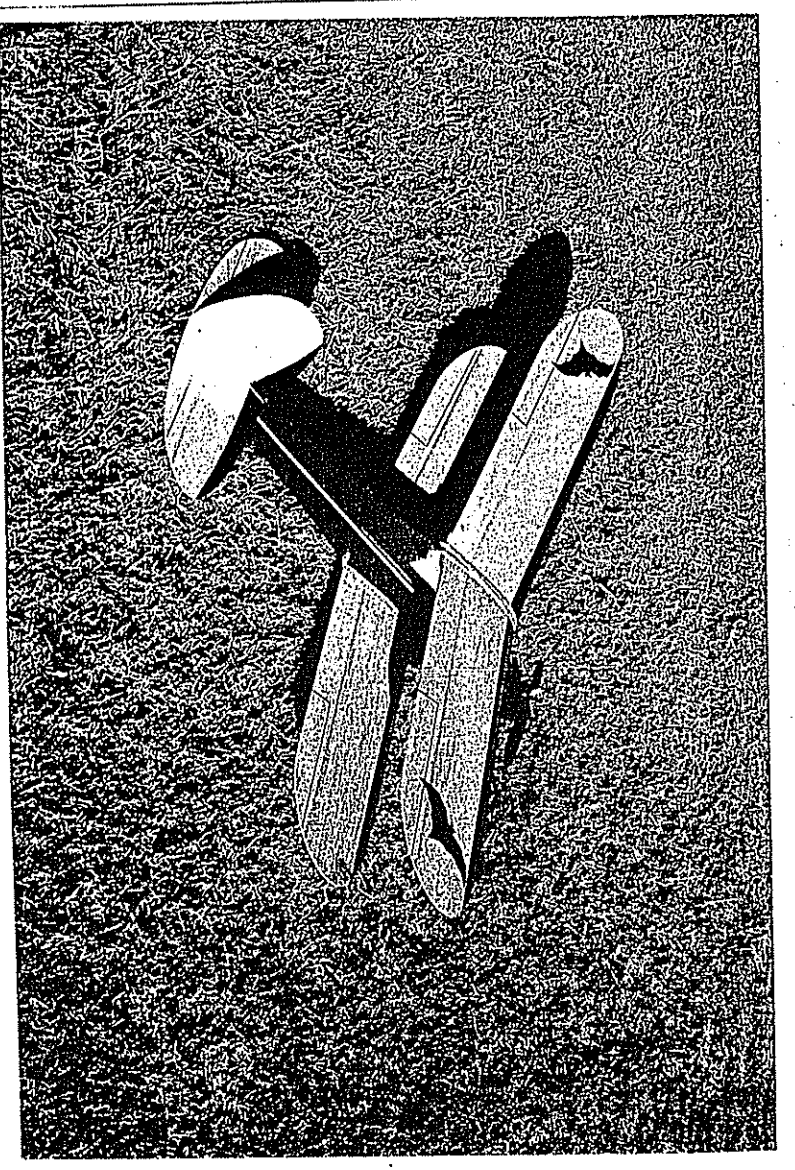


FORMERS C, D, E ARE THE SAME WIDTH A+B ARE 1/4 INDIANER (BEFORE OF WING SQUARE)



DESIGN IS NOT SET IN CONCRETE PLEASE ALTER DETAIL ACCORDING TO YOUR IDEAS

PLEASE READ THIS FIRST
 CLEAR FINISH
 2 COATS CLEAR FINISH (ALCOHOL) 2 COATS CLEAR FINISH (ALCOHOL) (SUGAR PASTE)



THIS IS FOR COX 049 FINISHED WITH BLACK CARBY BRACKET ARE NOT METAL TRUNK

1/2 STAYS FROM A REAR AS FORMER

FOR 33mm MOUNTING